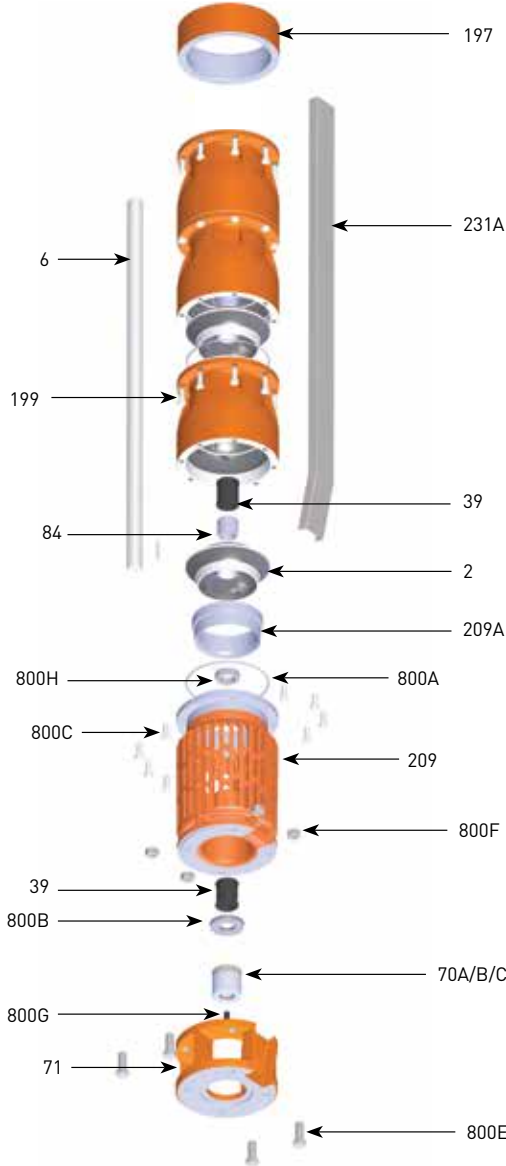


BERKELEY® 10TMH SERIES

750 GPM, 60HZ, NPT, 8" & 10" Motors

Section	ST-10TMH
Page	1.0
Date	March 21, 2018
Supersedes	New



10TMH-750 Common Parts Group			
Item Number	Part Number	Description	Req. Qty.
2	See table 2	Impeller	1/Stg
6	See table 3	Shaft	1
39	M16146	Bearing, Rubber	1/Stg
70A	M16764	Coupling, 8" motor (Inc key)	1
70B	M16765	Coupling, 10", "A" Register (Inc key)	1
70C	M16766	Coupling, 10", "B" Register (Inc key)	1
71	M16762	8" motor adapter	1
71	M16763	10" motor adapter	1
84	LV2275004 3080F	Collet	1/Stg
199	M17057	Bowl, see table 1 for assembly	1
197	M16720N	Discharge	1
209	M16761	Screen*	1
209A	M16759	Suction Insert	1
231A	See table 3	Cable Guard	1
800A	HYD6E136 9923F	O-Ring	1/stg
800B	M14791	Thrust Washers	3
800C	S23623	CAPSCREW,HEX HD 1/2-13NC X 1-1/2L 303SS	8/Stg
Not Shown	M09653PNR	Nameplate	1
Not Shown	M10199	Rivet	2
800E	11F7A0203 0005F	Screw-Cap 3/4-10X 2-1/4 UNC HEX 18-8 SST	4
800F	11F25A10008 0005F	NUT-HEX 3/4-10 UNC Regular 18-8 SST	4
800G	11FM8C0112 0005F	Cap Screw 1/2-13 X 1-1/4 UNC S Ocket Hea	1
800H	M16730	Sand Slinger 10TMH 316SS	1
Not Shown	S23982	Sand Collar Setscrews (2 req per slinger)	4
Not Shown	See table 3	Cable Guard Clamp	1
Not Shown	M13517	Direction Arrow	1

*Reqs qty 1 of HYD6E136 9923F O-Ring

TABLE 1 - Bowls and Bearings		
Item Number	Part Number	Description
39	M16146	Rubber Bearing
	M17017	Vesconite Bearing
	M16144	Bronze Bearing
199	B87064	Bowl Assy, rubber
84	LV2275004 3080F	Collet
800A	HYD6E136 9923F	O-Ring

TABLE 2 - Impeller Trims		
Item Number	Part Number	Description
2	M17058	10TMH-750 "A" Impeller 8.00"
	M17004	10TMH-750 "B" Impeller 7.766"
	M17005	10TMH-750 "C" Impeller 7.440"
	M17006	10TMH-750 "D" Impeller 7.248"

TABLE 3												
Series	Series	HP/kw	Stages	Trim				BM#	Shaft PN	Cable Guard	Cable Guard Hardware Kit	Assembled Pump Length
				"A"	"B"	"C"	"D"					
8" Motor	10TMH60-750	60/44.7kW	1		1			B87080	M17028	M17035	B87157	34.08 in / 866 mm
	10TMH75-750	75/55.9kW	1	1				B87164	M17028	M17035		34.08 in / 866 mm
	10TMH100-750	100/74.6kW	2			1	1	B87081	M17030	M17037		43.58 in / 1107 mm
	10TMH125-750	125/93.2kW	2	2				B87082	M17030	M17037		43.58 in / 1107 mm
	10TMH150-750	150/111.9kW	3				2	1	B87083	M17033		M17039
10" Mtr, "A" Register	10TMH175-750	175/130.5kW	3	2		1		B87084	M17033	M17046	B87158	54.08 in / 1374 mm
	10TMH200-750	200/149.1kW	4		1		3	B87086	M17034	M17048		63.58 in / 1615 mm
10" Mtr, "B" Register	10TMH175-750	175/130.5kW	3	2		1		B87085	M17033	M17046	B87158	54.08 in / 1374 mm
	10TMH200-750	200/149.1kW	4		1		3	B87087	M17034	M17048		63.58 in / 1615 mm

